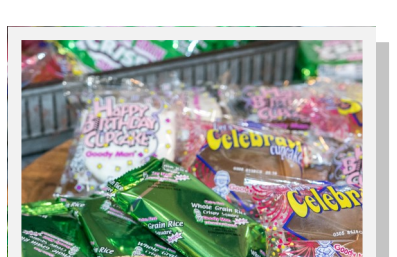
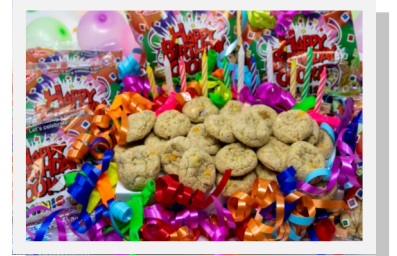




Smart Snack Solutions

| SB CODE # | CASE PK. | PRODUCT | Whole grain | Calories ≤ 200 | Sodium ≤ 200 | ≤ 35% calories from fat | < 10% calories from sat fat | ≤ 35% sugar by weight |
|-----------|----------|---|-------------|----------------|--------------|-------------------------|-----------------------------|-----------------------|
| 3334 | 60 | 2.5oz Ultra Stuffer - Cream Cheese and Strawberry Jelly | ✓ | 190 | 190 | 23.60% | 9.47% | 16.9% |
| 6085 | 120 | 1.3oz Happy Birthday Cookies | ✓ | 140 | 95 | 32.14% | 9.60% | 27.02% |
| 7010 | 100 | 1.9oz Goodyman Super Stik | ✓ | 180 | 170 | 30% | 7.50% | 25.90% |
| 7030 | 120 | 2oz Ultra Super Berry® Mini Loaf | ✓ | 160 | 140 | 28.10% | 5.60% | 29.80% |
| 7031 | 120 | 2oz Ultra Super Orange® Mini Loaf | ✓ | 160 | 110 | 25.30% | 2.80% | 24.50% |
| 7055 | 120 | 2oz Ultra Super Blueberry® Mini Loaf | ✓ | 150 | 105 | 27.00% | 3.00% | 24.50% |
| 7056 | 120 | 2oz Ultra Super Banana® Mini Loaf | ✓ | 160 | 105 | 25.30% | 2.80% | 24.50% |
| 7057 | 120 | 2oz Ultra Apple Cinnamon® Mini Loaf | ✓ | 160 | 110 | 25.30% | 2.80% | 26.30% |
| 7058 | 120 | 2oz Ultra Chocolate Chip Mini Loaf | ✓ | 160 | 105 | 25.30% | 5.60% | 24.50% |
| 7059 | 120 | 2oz Ultra Super Lemon® Mini Loaf | ✓ | 160 | 150 | 28.10% | 5.60% | 28.00% |
| 9050 | 72 | 2oz Ultra Blueberry Muffin | ✓ | 150 | 105 | 27.00% | 3.00% | 24.30% |
| 9052 | 72 | 2oz Ultra Banana Muffin | ✓ | 160 | 105 | 25.30% | 2.80% | 24.30% |
| 9053 | 60 | 2.4oz Ultra Corn Muffin | ✓ | 200 | 140 | 27.00% | 4.50% | 26.40% |
| 9054 | 72 | 2oz Ultra Cocoa Muffin | ✓ | 160 | 110 | 25.30% | 2.80% | 24.50% |
| 9055 | 60 | 2.4oz Ultra Jalapeno Corn Muffin | ✓ | 180 | 180 | 30.00% | 5.00% | 23.50% |
| 9065 | 96 | 2 oz Super Muffin—Banana Cream | ✓ | 140 | 160 | 22.50% | 4.00% | 19.00% |
| 9202 | 160 | 1.3oz Super Stars - Powdered | ✓ | 100 | 150 | 22.50% | 4.50% | 18.90% |
| 9430 | 100 | .8oz Goodyman WG Rice Crispy | ✓ | 100 | 50 | 22.50% | 9.00% | 30.00% |
| 9432 | 50 | 1.6oz Goodyman WG Rice Crispy | ✓ | 160 | 60 | 19.60% | 8.40% | 33.30% |
| 9478 | 72 | 1.5oz Happy Birthday 30-10-30 Cupcake - Chocolate | ✓ | 140 | 200 | 19.20% | 6.40% | 18.60% |
| 9479 | 72 | 1.5oz Happy Birthday 30-10-30 Cupcake - Vanilla | ✓ | 140 | 170 | 16.00% | 3.20% | 16.20% |
| 9488 | 72 | 1.5oz Let's Celebrate 30-10-30 Cupcake - Chocolate | ✓ | 140 | 200 | 19.20% | 6.40% | 18.60% |
| 9489 | 72 | 1.5oz Let's Celebrate 30-10-30 Cupcake - Vanilla | ✓ | 140 | 170 | 16.00% | 3.20% | 16.20% |
| 18200 | 80 | 1.9oz Ultra Power Cocoa Breakfast | ✓ | 140 | 170 | 28.90% | 9.60% | 20.30% |
| 18300 | 80 | 1.9oz MVP Breakfast | ✓ | 150 | 190 | 30.00% | 9.00% | 22.20% |
| 18350 | 80 | 1.9oz Whole Grain Super Donut | ✓ | 150 | 190 | 30.00% | 9.00% | 22.20% |
| BREADS | | | | | | | | |
| 7669 | 288 | 1.3oz Ultra Sliced Slider Roll | ✓ | 90 | 140 | 10.00% | 0.00% | 5.70% |
| 8676 | 90 | 2oz Ultra Eat-A-Bowl | ✓ | 160 | 125 | 22.50% | 2.80% | 8.70% |
| 8678 | 90 | 2oz Ultra Eat-A-Bowl - Ground Corn | ✓ | 180 | 100 | 30.00% | 5.00% | 8.70% |



The Leader in Bakery Nutrition!

09.01.19